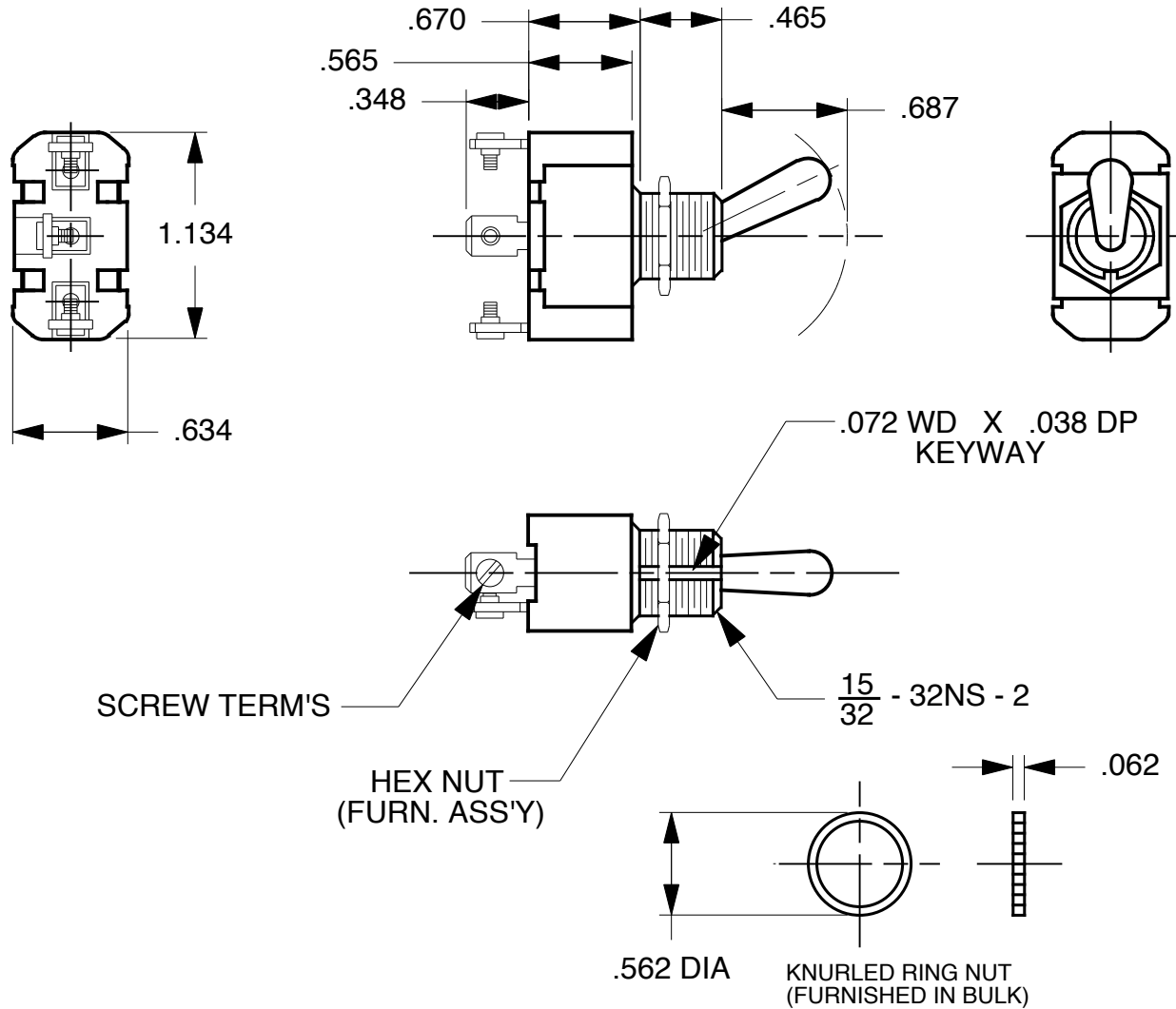


DO NOT SCALE DRAWING WORK TO FIGURE



DWG NO.		2FC44-73	REV.
LET	REVISIONS	DATE	

RATING	UL & CSA
10A	<u>250</u> VAC
20A	125VAC
3/4HP	125- <u>250</u> VAC

OPERATES:		
POSITIONS OF TOGGLE		
UP ON	CENTER OFF	DOWN ON

NOTES:  
 1. KEYWAY INDICATES DOWN POSITION  
 2. TOGGLE, BUSHING, RING NUT & HEX NUT ARE NICKEL PLATED

DIMENSIONS SUBJECT TO CHANGE WITHOUT NOTICE

FINISH

CARLINGSWITCH, INC.  
PLAINVILLE, CT

**PROPRIETARY NOTE:**

NOTICE TO ALL PERSONS RECEIVING THIS DRAWING. THIS DOCUMENT IS THE PROPERTY OF CARLINGSWITCH, INC. AND IS NOT TO BE DISCLOSED, REPRODUCED IN WHOLE OR IN PART OR USED FOR MANUFACTURING PURPOSES BY ANYONE WITHOUT THE CONSENT OF CARLINGSWITCH, INC.

UNSPECIFIED TOLERANCES

FRAC.  $\pm 1/64$  X.XXX  $\pm .015$   
 ANGLES  $\pm 1^\circ$

PROJECTIONS



DIMENSIONS  
IN [mm]

TOOL NO.	REV
DR BY	DATE
CHK BY	DATE
APPD BY	DATE

F. BELAND

12-6-95

TITLE		F SERIES TOGGLE SWITCH	
SIZE	DWG NO.	REV.	
A	2FC44-73		
USED ON	SCALE:	SHT	OF
	NONE	1	1